

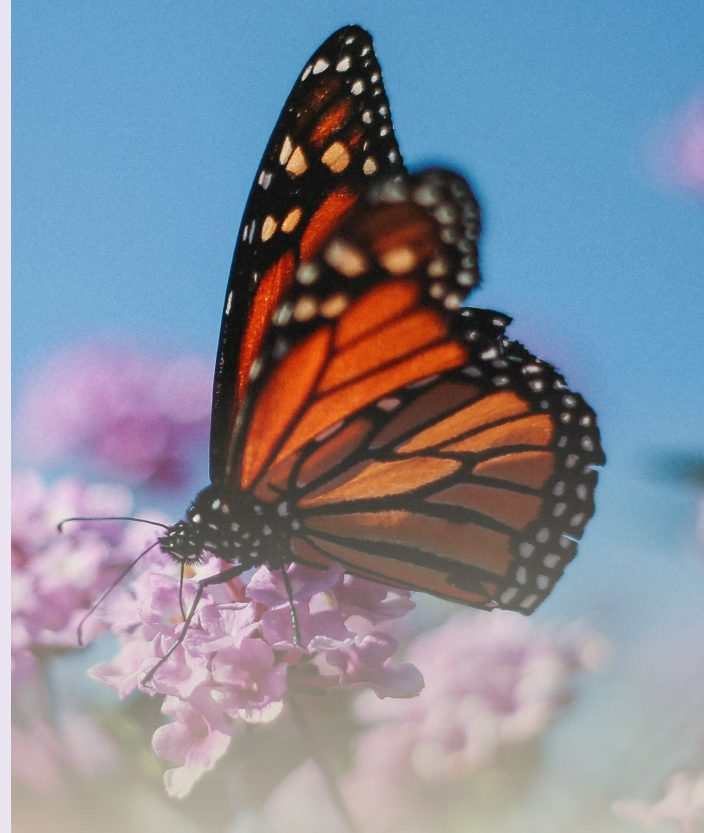
Deciding when to begin hospice care is an important decision.

Selecting hospice care at the earliest opportunity can provide someone with maximum relief from pain and discomfort, without hastening the course of their disease.

Following is a simple list of symptoms which may indicate hospice care is appropriate:

- Losing weight over the past six months, enough that clothing now fits loosely.
- Repeated hospital or emergency room visits over the past six months.
- Recurrent severe infections, including pneumonia, bedsores, or sepsis.
- Not eating enough to maintain body weight.
- Spending the majority of the day in a chair or bed.
- Needing help with two or more activities such as bathing, dressing, eating, walking, getting in or out of bed.
- Shortness of breath at rest or with any movement.
- Being told by a physician that life expectancy may be limited.

Call our team to learn more
866.464.7810



To begin services or for more information, call toll free:

866.464.7810
AskForAngela.com



Inpatient Care Centers in Livonia & Waterford
Palliative Care • Grief Care

14100 NEWBURGH ROAD, LIVONIA, MI 48154
A FELICIAN-SPONSORED MINISTRY

COMPASSIONATE CARE IN
THE PLACE YOU CALL HOME



Where The Heart Is



hospice at home

Angela Hospice is here to help individuals focus on living their best quality of life for their final months or weeks. Home hospice, the most popular type of hospice care, is ideal for many people because it allows them to receive the medical attention they need while in the comfort of their own home.

Once home hospice begins, the Angela Hospice team assesses the needs of the patient and works with their family and caregivers to teach them how to provide day-to-day care for their loved one. Because hospice is centered around the person — instead of their disease — the hospice team members work to nurture their emotional and spiritual wellbeing as well.



With various disciplines working together, our hospice team utilizes the latest advances in medications and devices, to ensure relief from pain and symptoms. Angela Hospice also assists in providing medication, supplies, equipment, and additional help in the home when needed.

HAVE PEACE OF MIND ABOUT YOUR LOVED ONES CARE

Home hospice care is paid for by most private insurers and HMOs, and is a Medicare Part A benefit to all eligible Medicare recipients age 65 and older. Medicare pays for all hospice-covered benefits, including costs for the medical team and supplies, as well as medications for symptom control and pain relief, all related to the hospice diagnosis.

Home Hospice Services Include:

- Visits by nurses, physicians/nurse practitioners for medication and symptom management
- Training for family caregivers
- Personal care assistance from a hospice aide
- Social work support for access to resources, coordinating documents, and providing psychosocial and emotional support
- Spiritual care services
- Continuous support available for care questions and managing symptoms

THERE FOR YOU DAY OR NIGHT

Angela's team is available to answer questions and provide support 24/7. In addition to scheduled visits and phone calls, Angela's Virtual Assist (AVA) telehospice is available to all home hospice patients and families, allowing them to quickly connect with an Angela Hospice nurse any time they need support, day or night.

